



# 25-GALLON LOW-PROFILE PORTABLE OIL DRAIN with ELECTRIC EVACUATION PUMP USER'S MANUAL

Part No. JDI-LP5

**READ AND SAVE THIS MANUAL**

FOR SERVICE ASSISTANCE, CALL 800-433-0708 OR VISIT [JOHNDOW.COM](http://JOHNDOW.COM)





## General Information

Read equipment manual and this material before using this drain.

### DANGER

*Indicates a hazardous situation that, if not avoided, could result in death or serious injury.*

- Oil is flammable. Keep away from heat, sparks, and open flames as an explosion will result in severe personal injury including death.

### CAUTION

*Indicates a hazardous situation that, if not avoided, could result in minor or moderate injury.*

- Personnel should always wear proper personal protection equipment and clothing.
- Ensure that all fittings and connections are properly tightened.
- Use care when rolling the oil drain when it is full of oil to prevent splashing or spillage.

### NOTICE

*Indicates information considered important, but not hazard-related.*

- Monitor the fluid level when filling the drain to prevent overflow or spillage.
- Periodically inspect the screen for debris that may prevent the flow of oil.
- Always connect the evacuation hose before running pump.
- Monitor the discharge hose when evacuating the drain to prevent overflow or spillage

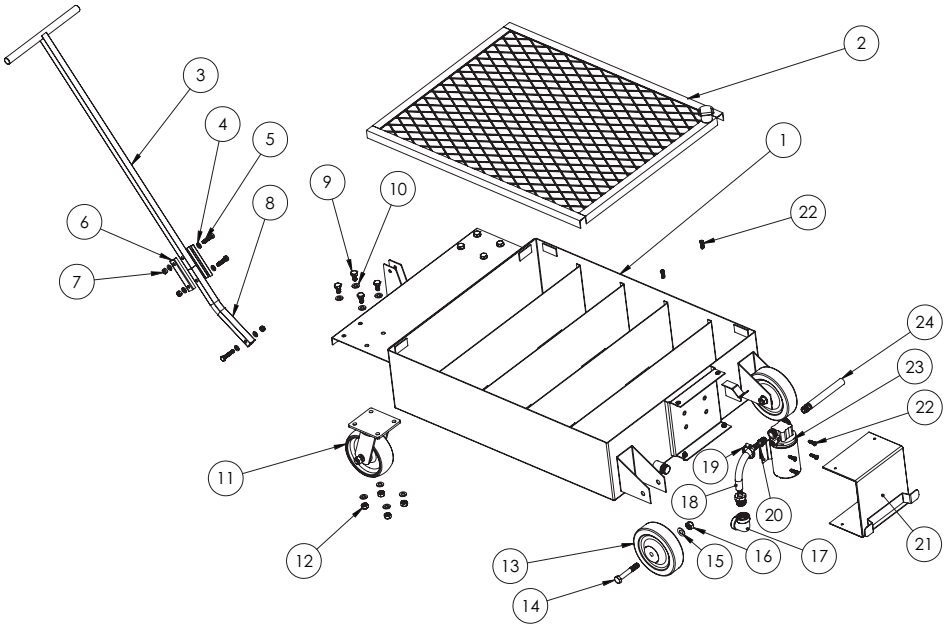
## CAPACITY AND DIMENSIONS

Max. Tank Capacity:	26.6 gal [100 L]	c. Electrical:	120 V/ 50-60 Hz
Functional Capacity:	22.6 gal [85 L]	d. Max. Flow Rate:	5 gpm [18.9 L/min]

## GETTING STARTED

Before assembly, ensure you have all parts according to the components list below. If any parts are missing or damaged, contact us for replacement.

## COMPONENTS



Item No.	Description	Qty.
1	Tank	1
2	Screen	1
3	Handle - Top	1
4	M8 Flat Washer	4
5	M8 Hex Head Cap Screw	2
6	Handle Brace	2
7	M8 Nylon - Insert Locknut	2
8	Handle Bottom	1
9	M10 Hex Head Cap Screw	8

Item No.	Description	Qty.
10	M10 Flat Washer	16
11	Front Swivel Caster	2
12	M10 Nylon - Insert Locknut	8
13	6" Wheel	2
14	M12 Head Cap Screw	2
15	M12 Flat Washer	2
16	M12 Nylon - Insert Locknut	2
17	3/4" NPT Elbow	1
18	1/2" x 5-1/2" Hose with 3/4" Fitting	1

Item No.	Description	Qty.
19	3/4" NPT Elbow	1
20	1/2" x 3.8" NPT Hose Barb Fitting	1
21	Pump Cover	1
22	M6 Hex Head Cap Screw	8
23	120V Electric Pump	1
24	1/2" x 6-1/2" Outlet Hose with 3/8" and 1/2" NPT Fitting	1
25	1/2" NPT Female Quick Connector	1
26	1/2" NPT Male Quick Connector	1
27	1/2" x 10' Evacuation Hose	1

## TOOLS & SUPPLIES NEEDED [Not included]

PTFE tape  
 1-1/16" open end wrench  
 19mm open end wrench

10 mm wrench  
 Pipe wrench  
 1-1/16" open end wrench  
 Flat screw driver

13mm open end wrench  
 17mm open end wrench

## ASSEMBLY INSTRUCTIONS

1. Assemble M12 flat washer [15], nut [16], and hex head screw [14] to wheels [13] using 19mm socket and wrench (Figure 1).
2. Assemble four M10 hex head screws [9], four M10 nuts [12], and eight M10 flat washers [10] per caster [11] using 17mm socket and wrench (Figure 2).
3. Wrap  $\frac{3}{4}$  NPT threads on drain with PTFE tape and assemble  $\frac{3}{4}$  NPT elbow [17]. Tighten using pipe wrench and position facing upward (Figure 3).
4. Remove eight M6 bolts [22] and pump cover [21] from rear of drain using 10mm wrench (Figure 4). Mount the pump [23] and reinstall four M6 bolts with 10mm wrench.
5. Wrap  $\frac{3}{4}$  NPT end of the  $\frac{1}{2}$  x 6-1/2 inch hose [18] with PTFE tape and thread into  $\frac{3}{4}$  NPT elbow [17]. Tighten with a 1-1/16 inch wrench (Figure 5).
6. Wrap PTFE tape onto the  $\frac{1}{2}$  x 3/8 NPT hose barb fitting [20] and thread into the inside of the pump [23]. Tighten with a 11/16 wrench.
7. Place the hose clamp [19] on the  $\frac{1}{2}$  x 6-1/2 hose [18]. Flex the hose to form a 90° arc and slide the hose end onto the  $\frac{1}{2}$  x 3/8 hose barb fitting [20] on the pump (Figure 6).
8. Position the hose clamp and tighten with flat head screw driver.
9. Wrap PTFE tape onto  $\frac{1}{2}$  NPT thread end of the  $\frac{1}{2}$  x 5-1/2 inch outlet hose [24] and assemble female quick connector fitting.
10. Wrap PTFE tape onto the 3/8 NPT end of the  $\frac{1}{2}$  x 5-1/2 inch outlet hose [24] and thread into pump [23]. Tighten with 11/16 wrench (Figure 7).
11. Reinstall the pump cover [21] using four M6 bolts [22] and tighten with 10mm wrench (Figure 8).
12. Wrap the electrical cord of pump on the cleat of pump cover.
13. Wrap PTFE on the  $\frac{1}{2}$  NPT thread of the  $\frac{1}{2}$  x 10' evacuation hose and assemble to the male quick connect fittings.
14. Assemble four-piece handle assembly [3, 6 x2, 8] with four M8 washers [4], nuts [7], and hex head screws [5], using 13mm socket and wrench (Figure 9).
15. Attach handle assembly to tank with two M8 washers [4], nut [7], and hex head screw [5] using 13mm socket and wrench.

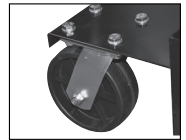


Figure 1

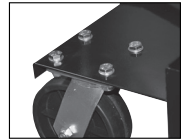


Figure 2

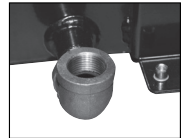


Figure 3



Figure 4

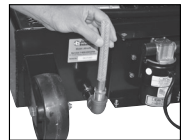


Figure 5

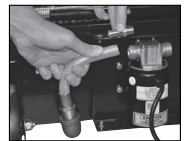


Figure 6

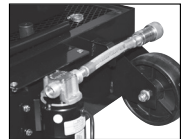


Figure 7

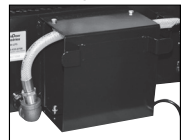


Figure 8



Figure 9

## OPERATING INSTRUCTIONS

### To Fill:

1. Roll the drain under the vehicle and drain the fluid into the drain.

### To Empty:

1. Position the drain next to the used oil storage receptacle.
2. Attach the 10' evacuation hose to the pump outlet side quick connect coupler. Make sure connection is secure.
3. Place the other end of the evacuation hose securely into the used oil receptacle.
4. Plug the electric pump into a 120V outlet. The pump will self prime and start to pump.
5. Monitor the level in the drain and unplug the pump when the drain is evacuated.
6. When finished, disconnect the evacuation hose and position the end onto the cradle. Wrap the electrical cord onto the storage cleat.